

Abbreviated Brand Guidelines

CLEAR SPACE

When using the Nest logo, you must ensure there is enough margin of space equal to or greater than the “n” to allow breathing room from any other text, edge, or design.



MINIMUM SIZE

The minimum size to apply the Nest Realty logo is 0.5 in. wide.



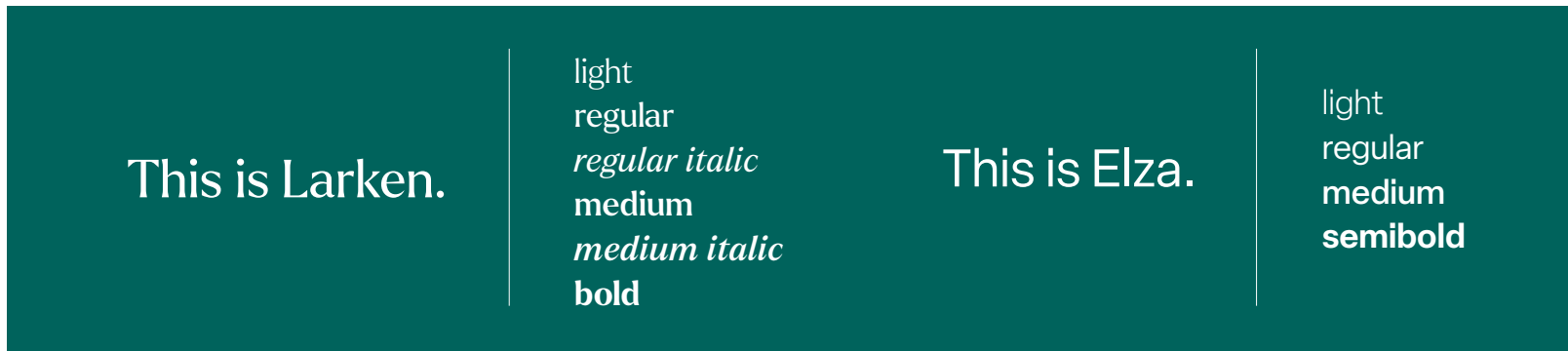
BRAND COLORS & SANCTIONED COLORWAYS

FOREST GREEN	EMERALD	PISTACHIO	MIST	WHITE
RGB = 1 / 54 / 45 HEX = 01362D CMYK = 89 / 52 / 72 / 61	RGB = 0 / 99 / 92 HEX = 00635C CMYK = 90 / 40 / 62 / 2	RGB = 208 / 214 / 187 HEX = D0D6BB CMYK = 19 / 8 / 29 / 0	RGB = 246 / 247 / 241 HEX = F6F7F1 CMYK = 2 / 1 / 4 / 0	RGB = 255 / 255 / 255 HEX = FFFFFFFF CMYK = 0 / 0 / 0 / 0



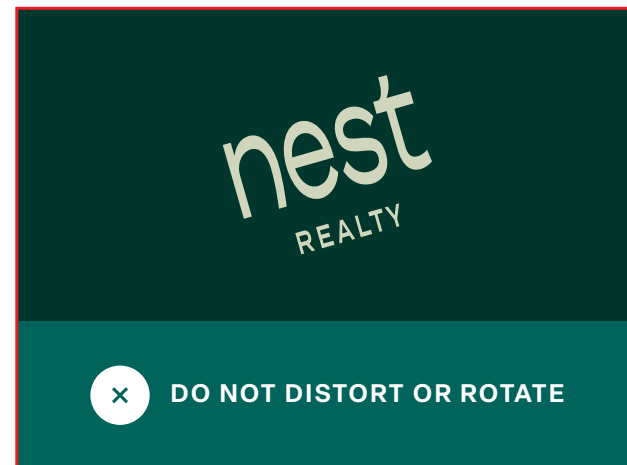
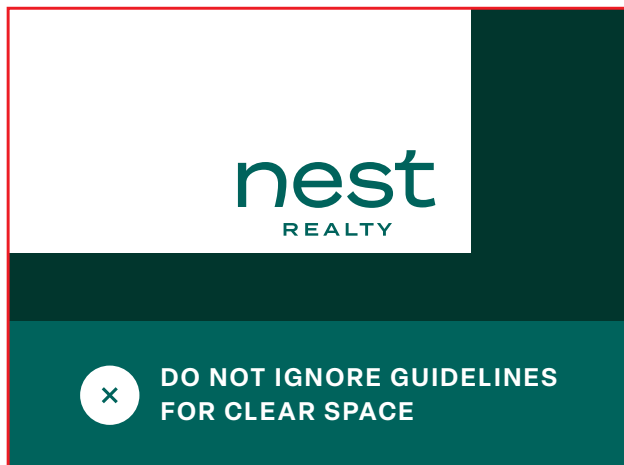
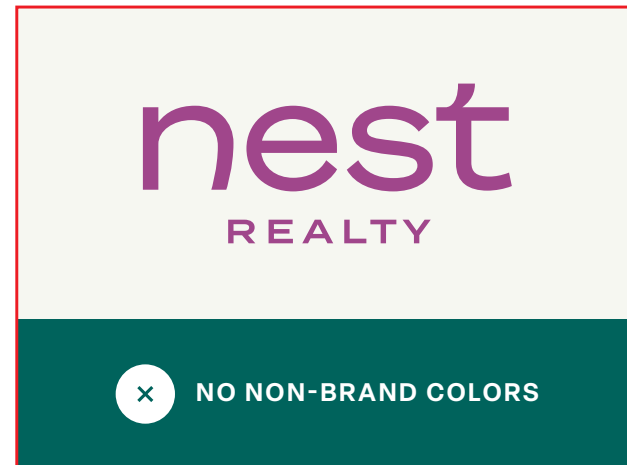
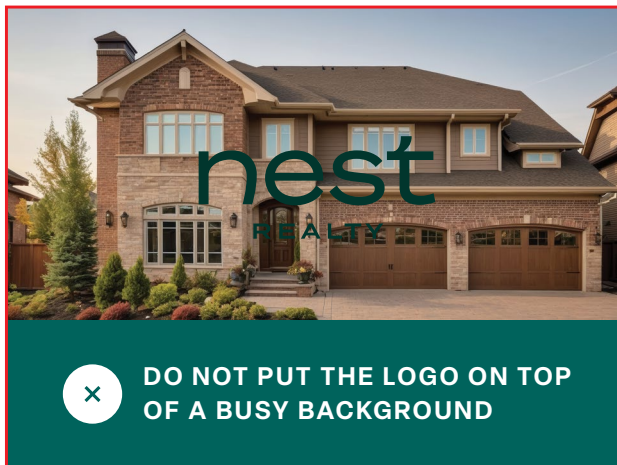
THE FONTS

Larken is intended for headlines. Elza is our utilitarian font intended for subheaders, body copy, and captions.



Abbreviated Brand Guidelines

INAPPROPRIATE LOGO USE



PROVIDED FILE FORMATS

A .jpg file is a bitmap (or pixel-based) image that can be uploaded anywhere you would upload a photo. This file format is recommended for print application. Use cases include postcards, door hangers, magazine ads, and anything printed in-office.

A .png file is also a bitmap image. However, this file format has a transparent background and is recommended for digital application. Use cases include social media avatars, web ads, and anywhere you would like to use a logo on a dark or patterned background.

An .eps file is vector-based, making it infinitely scalable and compatible with most design programs. This is the recommended file format for large logo applications and third party vendors. Use cases include signage, merch, and scenarios requiring “design” or “vector” files.